



# Chargevite S

## Technical specifications

Chargevite S is the best self-managed choice for single-family homes, condominiums and hotels, but suitable as well for companies and stores.

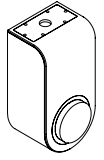
[www.chargevite.com](http://www.chargevite.com)

© 2021 Chargevite Energy, S.L.U. - All rights reserved.



# Chargevite S

## Technical specifications



### General information

Charging station	Chargevite AC S
Model	ACSB

### Electrical design

Power	7.2 kW (single-phase)
Voltage	230 V <sub>AC</sub> 1P+N
Max current	32 A
Frequency	50 - 60 Hz
Stand-by consumption	< 9 W

### Configuration and installation

Charging mode	3
Number of sockets	1
Electric Vehicle connection	Type 2 socket (IEC 62196)

### Mechanical design

Dimensions (H x W x D)	305 x 160 x 140 mm
Weight	2.3 kg
IP Protection	IP54
IK Protection	IK10
Working temperature range	-35°C to 50°C
Max humidity	98% without condensation

### Control and connectivity

Communications and control	<ul style="list-style-type: none"> <li>• Onsite control through direct connection</li> <li>• WiFi &amp; Ethernet connexion to embedded website / 4G on request</li> <li>• Other protocols on request</li> </ul>
----------------------------	---